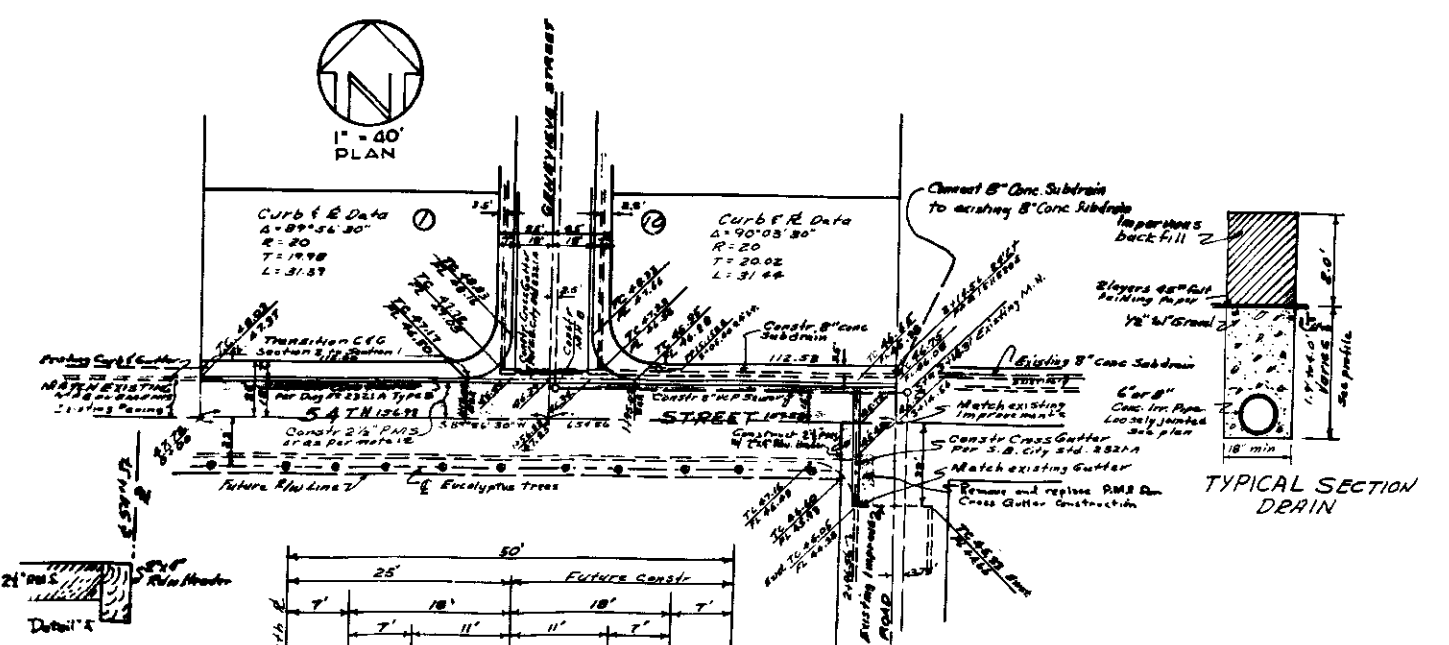
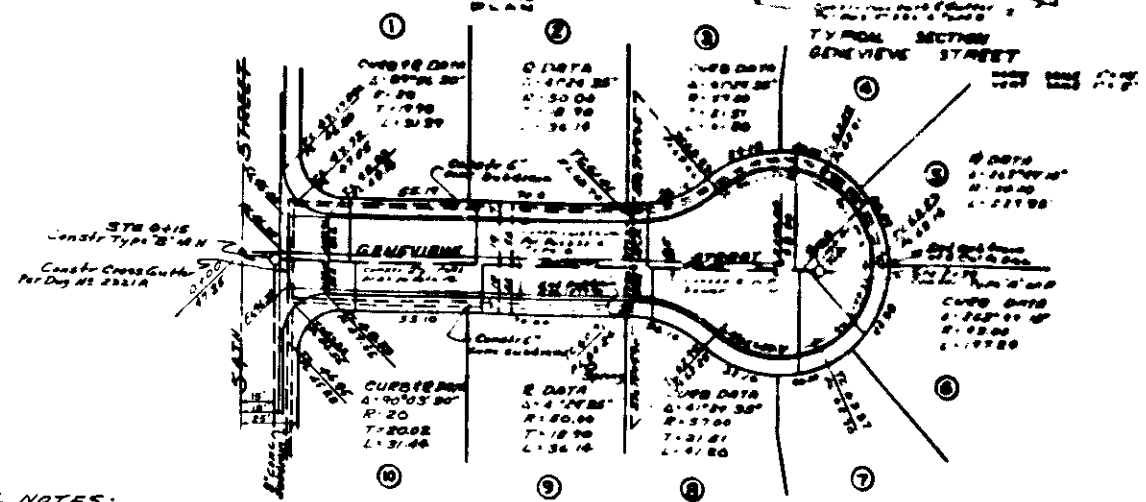
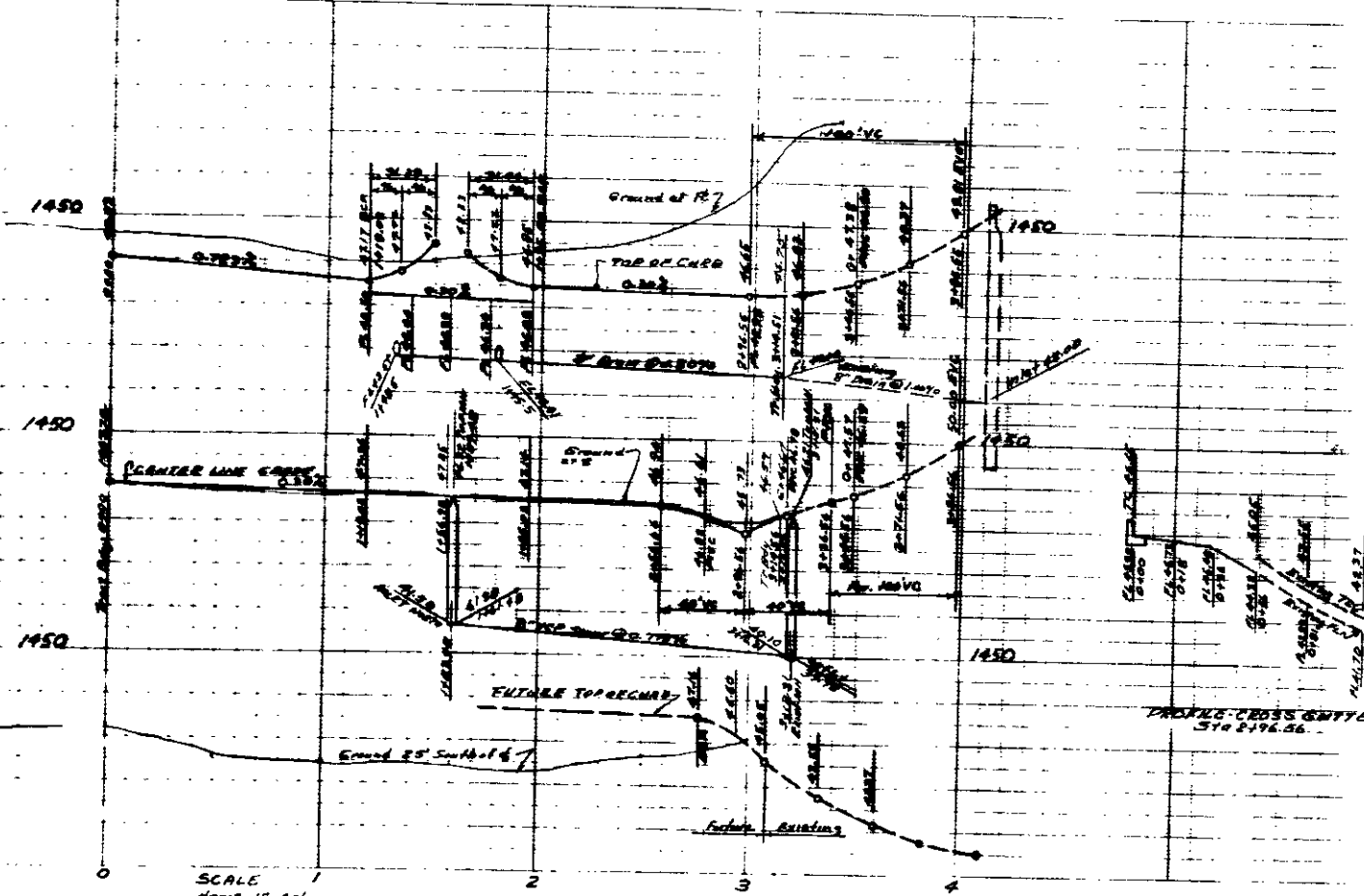
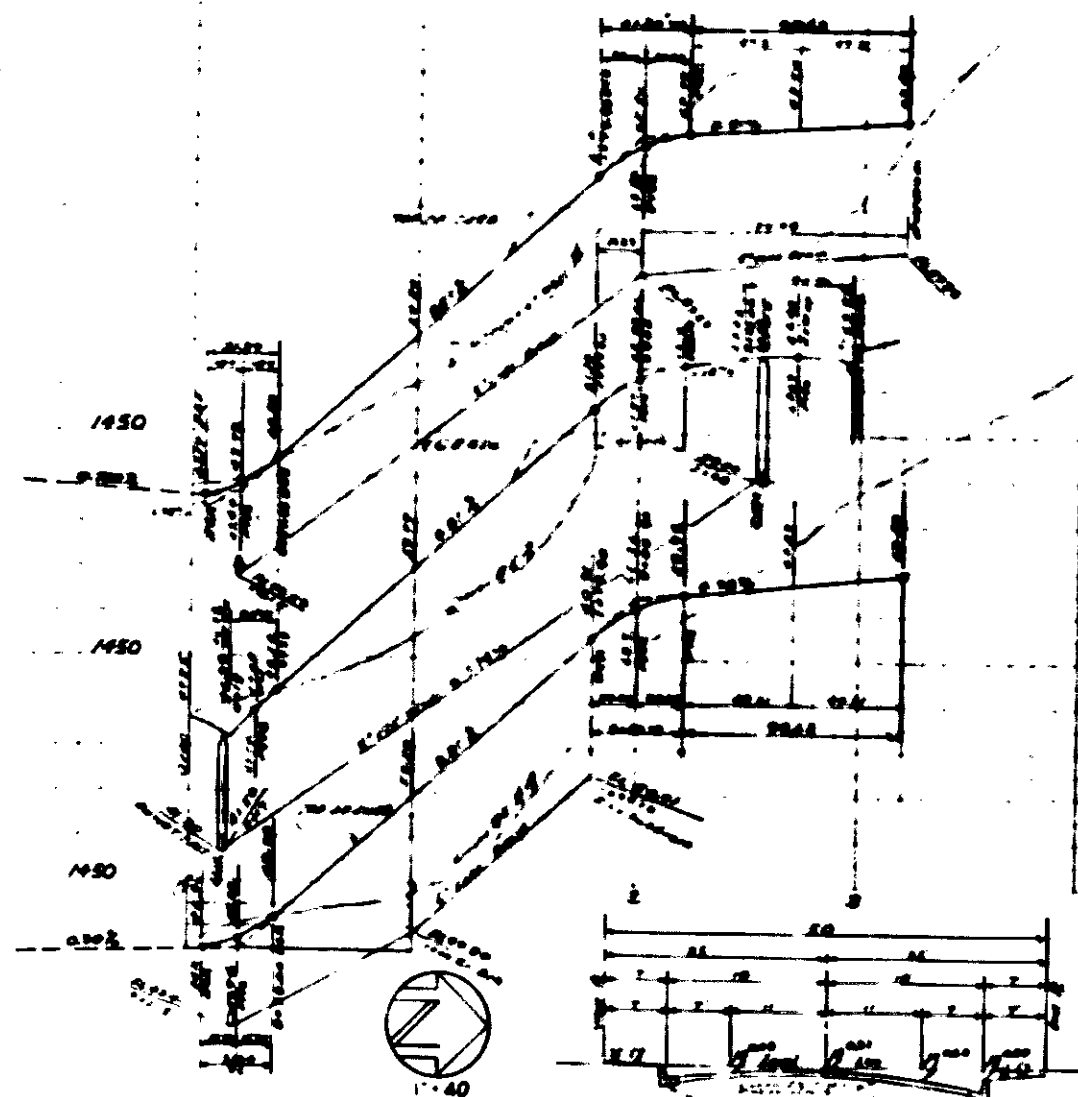


GENERAL NOTES:

1. All work shown on these plans shall be done in conformity with applicable provisions of specifications No. 2871 of the City of San Bernardino.
2. 24" x 4" wyes with connecting sewer to be constructed shown on plan by "a".
3. All house connections shall be constructed on an upward grade of 2 percent from main sewer and shall extend from the main sewer to property line.
4. All house connections are approximate and exact locations shall be determined in the field.
5. Manhole frames and covers to be constructed by sewer contractor 6" below of final grade and covers to set off 1/2" grade.
6. All Standard Cross-sections of Curb & Gutter are as per City of San Bernardino Department of Engineering Std. Drawings No. 2881.

7. The contractor is required to take all the precautionary measures to protect the utility line and any other lines not shown or not shown on these drawings.
8. Sewer Admittance to be constructed of either "Needy Lock" "Special Seal" or "Band Seal" type pipe or asbestos cement pipe. Sewer manholes shall be constructed of either "Needy Lock" "Special Seal" or "Band Seal" type pipe.
9. Manhole steps shall not be required. Manhole frames and covers shall be Alameda Foundry No. A-1780 (Sika) (rough) or approved equal.
10. Bank Marks 3/4" in front of 51st & Sierra Way Elev. 1404.33 BM # 37 N.E. Con. 54" (See View Elev. 144.15).
11. All underground spring water uncovered during construction must be drained by underground system. No open drainage of spring water permitted on tract site.
12. Subdrains

NOT CONSTRUCTED
 OF 1-2-77
 Ralph J. Stone RCE 12620
 DEPARTMENT OF ENGINEERING
 CITY OF SAN BERNARDINO
 IMPROVEMENT OF
 GENEVIEVE STREET, PORTION 54TH ST.



GENERAL NOTES:

1. All work shown on these plans shall be done in conformity with applicable provisions of specifications No. 2871 of the City of San Bernardino.
2. 24" x 4" wyes with connecting sewer to be constructed shown on plan by "a".
3. All house connections shall be constructed on an upward grade of 2 percent from main sewer and shall extend from the main sewer to property line.
4. All house connections are approximate and exact locations shall be determined in the field.
5. Manhole frames and covers to be constructed by sewer contractor 6" below of final grade and covers to set off 1/2" grade.
6. All Standard Cross-sections of Curb & Gutter are as per City of San Bernardino Department of Engineering Std. Drawings No. 2871.

7. The contractor is required to take all the precautionary measures to protect the utility line and any other lines not shown or not shown on these drawings.
8. Sewer Admittance to be constructed of either "Needy Lock" "Special Seal" or "Band Seal" type pipe or asbestos cement pipe. Sewer manholes shall be constructed of either "Needy Lock" "Special Seal" or "Band Seal" type pipe.
9. Manhole steps shall not be required. Manhole frames and covers shall be Alameda Foundry No. A-1780 (Sika) (rough) or approved equal.
10. Bank Manhole 36" in dia of 51st & Sierra Way Elev. 14043.80 BM # 37 N.E. Con. 54" (See View Elev. 14043.80).
11. All underground spring water uncovered during construction must be drained by underground system. No open drainage of spring water permitted on tract site.
12. Subdrains.

NOT CONSTRUCTED
 OF 1-2-77
 Ralph J. Stone RCE 12620
 DEPARTMENT OF ENGINEERING
 CITY OF SAN BERNARDINO
 IMPROVEMENT OF
 GENEVIEVE STREET, PORTION 54TH ST.